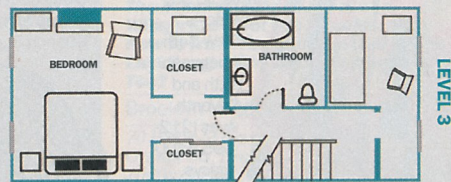
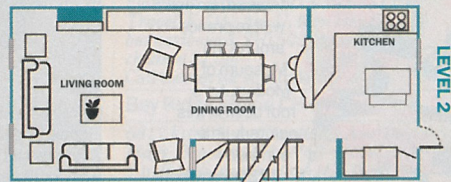


Apartment tour 2BR townhouse in Long Island City

Interior designer Thom Lindsley indulges the whims of his latest client—himself. By **Cristina Velocci**



1 Thom Lindsley (*lindsleydesign.com*) purchased his three-story townhouse—built in 1880—with his partner, video editor Bill McDonald, nine years ago; it's been a labor of love ever since. "As a designer, it's even harder to do your own place because you want *everything*," he says. This custom-made dining-room table seats up to 12 people, and the Ligne Roset chairs are covered in Ultrasuede.

2 Illustrator Kerri Ferrara (*kferraredesign.com*), painted this anime-esque mural in Lindsley's

foyer. "I have a thing for Henri de Toulouse-Lautrec and the cancan girls," he says. "She even drew Milo [Lindsley's beagle]. It puts a smile on my face when I walk in the door."

3 This slate fireplace is original to the house. "It was painted over about 15 times," says Lindsley.

4 Lindsley and Milo, hanging in the spacious townhouse's hallway.

5 Shutter doors from a house in India hang above his bed, which he bought from BoConcept. Bedding from Bloomingdale's hotel line lends the space a crisp look.

6 This statue was a gift from a friend and depicts the Hindu god Shiva as the lord of dance. "In a past life I was a dancer," says Lindsley, who used to perform in musical theater. "So this goes back to my dancing days."

LOVE THE LOOK? GET IT HERE!

► **International Garden** (807 Sixth Ave at 28th St; 212-929-9418, *internationalgarden.net*) Lindsley buys most of his flowers from this high-end florist.

► **Tufenkian** (919 Third Ave between 55th and 56th Sts; 800-432-9917, *tufenkiancarpets.com*) The red wool-and-silk Tibetan rug in Lindsley's living room came from this artisan carpet company.

